

2024 Camp Wonder Parent Handbook



TABLE OF CONTENTS

Day Camps

Welcome, Check In & Out, Before & After Care	1
PINs, Forms, Optional Overnights	2
Health & Safety, Dress Code, Weather	3
Lost & Found, Behavior Policy, Packing List	4
Example Schedule	5

Overnight Camps

Welcome, Contact Info, Forms	6
Check In & Out, PINs	7
Medication, Store Money, Mail	8
Behavior Policies, Meals, Food Allergies	9
Schedules, Activities, Swim Tests	10
Packing List	11
	12

Excursions

Intro	13
Contact info & PINs	13
Check-In & Out	14
Medication	14
Packing List	15

CITS

Intro, Contact Info	16
Check-In & Out	17
Packing List	18
Behavior Policies	19



Day Camp

Dear Camp Wonder

Families,

Thank you for registering your child for Day camp! We are so excited to have your camper join us this summer. Our goal is to provide a fun and enriching summer camp experience. This page will help you prepare you and your child for a fun and safe camping experience here at Camp Wonder.

Check in/Check out

Check-in: 8:00 am – 9:00 am
Check out: 4:00 pm – 5:00 pm

- Drop off and pick up for all of Day Camp/Specialty Camp will be at **Grindley Lodge** in the back of our property, and can happen anytime within the check-in/ out timeframe.
- You will stay in your car and pull into "lanes" where a staff member will assist you.
- If you have to drop off late or pick up early, please inform us ASAP by calling or texting 810-599-0367.
- Late drop-offs or early pick-ups will happen at **Lakeview Lodge**.

Attendance Options

5-day: Monday-Friday
3-day: Wednesday-Friday
2-day: Monday-Tuesday
*No single day options available

Before/After Care

Before Care: 7:00 am – 8:00 am
After Care: 5:00 pm – 6:00 pm

- Available for \$10 extra per session (pre-registration required).
- Drop off & pick up can happen anytime within the before/after care timeframe.



Forms

Every Camper will need to have the following 3 forms completed (or updated) before the start of Day Camp:

- Health Form
- Agreement to Participate Form (Waiver)
- Camper Code of Conduct Form

Camper PIN

- On the first day your camper checks in, you will receive a unique PIN for your camper (siblings will not share a code).
- This private code must be given/shown to the check-out staff to pick up your camper.
- **PLEASE ONLY SHARE THIS CODE WITH ADULTS that you trust with** picking up your child. You may text them the code number or send them a picture.

Day Camp Overnights

- Overnights: \$ 50 (Only Campers 3rd - 8th Grades Registered for FULL WEEK Monday - Friday are eligible to attend)
- Campers will have the opportunity to sleep over on select Thursday nights for a “taste” of the Camp Wonder’s Overnight Camp.
- Dinner and a continental breakfast will be served, as well as an assortment of evening activities.
- Friday lunch is **not** provided
- Campers will need to bring a sleeping bag, pillow, flashlight, pajamas, toiletries, and a change of clothes.
- Campers must attend the FULL WEEK sessions to be eligible to sleepover.



Camper Health and Safety

- ALL camper medication must be given to the Health Officer in its **original packaging**.
- You can choose for your camper's emergency medication (i.e. Epi-Pens/Inhalers) to stay at camp all summer or be returned each week.
- Your camper's counselors will carry the emergency medication with them at all times.
- Campers are **not** permitted to carry any medication on them.

Inclement Weather

We all know that Michigan is not sunny and 75°F all summer long. As much as we would love it to be perfect all summer long we know stormy days are inevitable.

- We are a rain or shine camp. Our activities will continue as long as there is no lightning or thunder.
- We recommend campers bring a rain coat, rain boots, or an umbrella on rainy days.

We also know that there will be some days where its just too hot.

- Camp staff will determine when campers need to be brought indoors and will adjust the schedule if needed.
- Mandatory swim may be required. This is when all campers must put their feet in the water for at least 15 minutes.

Camper Dress Code

- Camp mirrors most schools' Dress Code policies.
- Campers must wear **closed-toed shoes**.
- It is highly recommended that campers bring a change of clothes with them each day.



Behavior Policy

- Positive Behavioral Interventions and Supports, we believe, are the best way to prevent potential behavior issues and provide quality camp programming. With engaging, impactful, and fun activities, we believe that many problems can be avoided.
- In the event that a camper is unable to adhere to camp policies and counselor rules, the following action steps will be put into effect:

Our 3-Strike policy

- Strike 1: Camper is sent home for the **day** (No refund)
- Strike 2: Camper is sent home for the rest of the **week** (No refund)
- Strike 3: Camper is sent home for the rest of the **summer** (No refund)

Packing List

- Backpack
- Lunch
- Refillable Water Bottle
- Swimsuit (Water shoes can be worn at swim times)
- Towel
- Change of clothes
- Sunscreen and Bug spray
- Rain Gear
- Hat and Sunglasses

Please do **NOT** bring:

- Electronic devices (Cell phones, Tablets, Video games, etc.)
- Weapons of any kind including pocket knives

Please label all items with your camper's name

*Note: We are not responsible for lost items

Lost and found

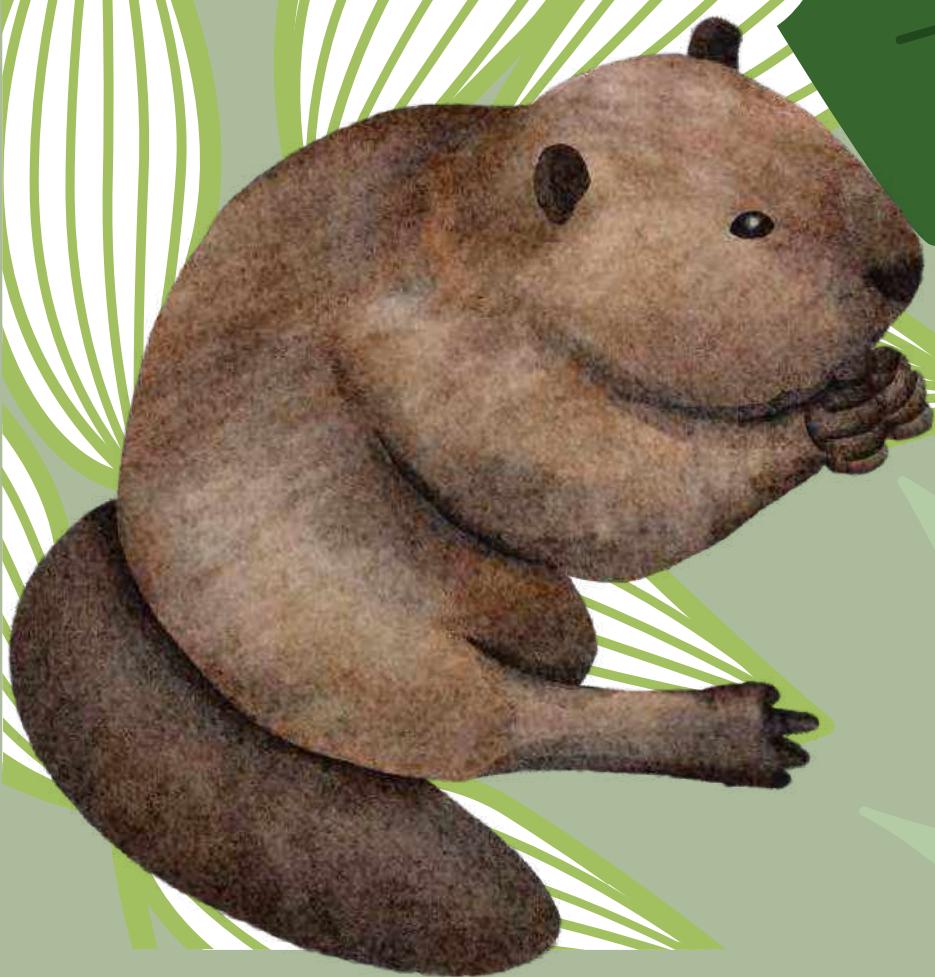
- We have a Day Camp Lost & Found that is managed by our staff.
- If your child's item(s) are labeled with their name, we will bring it to them if found.
- Campers will walk through the Lost & Found to check for their items at least once throughout the week.
- Parents/Guardians are welcome to look through the Lost & Found during check-in/check-out.



Day Camp Example Schedule

Time	Monday	Tuesday	Wednesday	Thursday	Friday
8:00-9:00am	Arrive	Arrive	Arrive	Arrive	Arrive
9:15-9:30am	Morning skit	Morning skit	Morning skit	Morning skit	Morning skit
9:45-10:45am	Wild wonders	Nature scape	Fisdhing	Arts and Crafts	Zipline
11:00-12:00pm	Aqua Jump	High Ropes	Swim	Corkle	Swim
12:15-1:00pm	Lunch	Lunch	Lunch	Lunch	Lunch
1:00pm-2:00pm	Capture the flag	Swim	Low ropes	Swim	All Camp Game
2:00-3:00pm	Swim	Survival	Nature Scavenger hunt	Archery	All Camp game
3:00-4:00pm	Eggburt	Smore's	Theme Activity	Pontoon	All Camp game
4:00-5:00pm	Pick up	Pick up	Pick up	Pick up	Pick up

Camp is filled with a wide range of activities, allowing campers the opportunity to enjoy their camp favorites as well as push themselves out of their comfort zone!
**Please note that daily schedules may change based on weather and themes for each week.*



Overnight Camp

Dear Camp Wonder Families,

Thank you for registering your child for a Camp Wonder Overnight Session. We can't wait to meet your camper this summer! The information should help prepare you and your child for their overnight camp experience. If you have any questions or concerns, please reach out!

Contact Information

In case of an **emergency** during camp, you may reach one of our Camp Directors at **517-375-9713**. We ask that you only use this number in the case of an emergency.

For all other inquiries, please call our Welcome Center at 517-546-0249.

Forms

Every Camper will need to have the following 3 forms completed (or updated) before the start of their Overnight Camp:

- Health Form
- Agreement to Participate Form (Waiver)
- Camper Code of Conduct Form

These forms are built right into the online registration.



Fees

All fees must be paid in full before arriving to camp. Please see our online registration system for more details.

Check-in & Check out

Check-in:

Sunday 3:00 pm - 4:30 pm

- Check-in will take place at Grindley Lodge (see site map).
- Check-in will take place on a rolling basis. Please arrive during your time slot, which will be determined by the first letter of your last name.
 - Last names beginning with A-L: Arrive between 3:00 pm – 3:45 pm
 - Last names beginning with M-Z: Arrive between 3:45 pm – 4:30 pm
- When you arrive, please pull into the parking lot, exit your vehicle, grab any mail, camp store money, or medications, and head to the check-in table. (You can leave your camper's luggage in the vehicle.)
- At the tables, we will share your cabin and travel group assignments and verify Friday pick-up information as well as collect any medications, mail, or camp store money.

Check out:

Friday 2:00 pm - 3:00 pm

- Check-out will take place at Grindley Lodge (see site map).
- All families should arrive at 2:00 pm on Friday for our closing celebration!
- When you arrive, please park and head into Grindley Lodge. The slideshow will begin promptly at 2:15 pm.
- After the slideshow, campers will be grouped according to their cabin assignments.
- Families will be instructed to head back outside to the checkout table and give their PIN code to the Camp Director and pick up any medications or leftover store money.
- Families will then show the “check out slip” to their camper's counselor in order to pick up their child.
- Afterwards, all families are invited to share in an ice cream party before heading out!

Camper PIN

- At check-in, you will receive a unique **PIN** for each camper.
- This private code **must** be given at check out to pick up your camper.
- **PLEASE ONLY SHARE THIS CODE WITH ADULTS** that you trust picking up your camper. You may text them the code or send them a picture.



Camper Policies

Medications

- Medication must be turned in at check-in to the Health Officer. Campers are not permitted to carry their medications.
- All prescription medication must be in its original prescription bottle with the child's name on the label, and by state law, dispensed according to the directions on the label.
- If the doctor has changed the dosage or directions for administration, submit a signed letter from your physician with the new directions. This letter must include the child's full name, dosage amount, and delivery time(s).

Store Money

Optional: You may send spending money with your camper. It will be collected at check-in and stored until their cabin visits the camp store. Any unspent money will be returned at check-out or can be donated to our camp fund.

Average prices:

- Sweatshirts: \$40
- T-shirts: \$16
- Stuffed Animals: \$12-\$22
- Stickers and Keychains: \$3-\$8

Camper mail

Optional: Campers love mail! You may mail your camper letters, or drop them off at check-in with the designated day of the week you'd like them delivered. If mailing, please send it early in the week to ensure it arrives on time.

Mailing Address:

Howell Nature Center Camp Wonder
Attn: [Camper Name] [Age Group]
1005 Triangle Lake Road
Howell, MI 48843

Campers may not bring cell phones or other electronic devices. Please do not call your camper. In case of an emergency, use the contact number listed on page 4. Weapons (including pocket knives) are also prohibited.

Behavior Management

Inappropriate behaviors will not be tolerated. A child exhibiting any of the following behaviors will be immediately suspended from camp: bullying, violence, sexual harassment, endangering the safety of any camper or staff member, any type of discrimination, theft, verbal abuse, and possession of any type of weapon. Incidents will be reviewed by administrative staff and a determination of the child's eligibility for continued attendance at camp will be made. Parents will be notified of the results of this review. Incidents will be handled on a case-by-case basis. No refunds for any camp fees paid will be issued in the event of disciplinary expulsion.

Discipline will be handled in the following manner:

Step 1: Counselor will address behavior with the camper, helping the camper to understand the rules and take responsibility for changing the behavior.

Step 2: Camp Coordinator will meet with the camper to discuss and implement solutions.

Step 3: The camper will meet with the Program Coordinator. Parental contact and clear objectives will be established.

Step 4: The camper will be removed from camp without a refund. A parent or guardian will be asked to pick up the camper from Howell Nature Center or from a trip site as soon as possible.

Meals

- All of our overnight campers come together for meal times and will eat with their cabins.
- Meals are served buffet-style.
- We provide kid friendly meals options and make sure everyone is well-fed!

Food Allergies

- We can accommodate most dietary restrictions with advance notice. Please notify us at least 3 weeks before camp if your child has any allergies or other restrictions that were not included on your registration form.
- Our kitchen is not certified gluten-free, and we cannot guarantee absolutely no cross-contamination for campers with celiac disease. Our camp is also not nut-free, though we can provide nut-free meal options.
- If you have concerns regarding your child's allergies, please reach out!



Schedule & Activities

Daily Schedules

- Our campers typically wake up at 7:30 am to get ready and head to breakfast.
- Campers then come together for a stewardship activity and two cabin activities.
- After lunch, campers have a rest hour in their cabins, then another cabin activity and time at the waterfront.
- The evenings are filled with all-camp traditions like campfires, capture the flag, and mock rock!
- Campers then head back to their cabins for snacks, intentions, and bedtime with lights out at 11:00 pm.

Swim Assessments

Our Swimming area is split into two zones, plus our inflatable water toys.

- **First Zone:** All campers may swim without a life jacket
- **2nd Zone:** Campers must pass a swim test to not use a lifejacket. They will have an opportunity to take this Sunday night.
- **Boating and Aqua Toys:** All campers must wear a lifejacket regardless of swim ability.

All Activities and Schedules are subject to change

Camp Wonder makes no guarantees about the inclusion of any specific activity, and refunds will not be given based on changes to the schedule due to inclement weather or other circumstances.

We are a rain or shine camp, meaning that our activities will continue as long as there is no thunder/lightning or other dangerous weather. In extreme heat, Mandatory Swim may be instituted. All campers must put their feet in the water for at least 15 minutes.



Example Schedule

Time	Monday	Tuesday	Wednesday	Thursday	Friday
8:00–8:45am	Breakfast	Breakfast	Breakfast	Breakfast	Breakfast
8:45–9:30am	Stewardship	Stewardship	Stewardship	Stewardship	Stewardship
9:45–10:45am	Archery	Survival	Wild Wonders	Arts and Crafts	Zipline
11:00–12:00pm	Aqua Jump	High Ropes	Mock Rock practice	Canoe	Fishing
12:15–1:00pm	Lunch	Lunch	Lunch	Lunch	Lunch
1:00pm–2:00pm	Rest Period	Rest Period	Rest Period	Rest Period	Pack up
2:15–3:15pm	Hammock Ville	Campers Choice	Tye Dye	Campers Choice	Parents come
3:30–4:30pm	Free Swim	Free Swim	Free Swim	Free Swim	Home
4:45–5:45pm	Gaga Ball	Campers Choice	Jungle Joe	Campers Choice	
5:45–6:45pm	Dinner	Dinner	Dinner	Dinner	
6:45–7:45pm	Cabin time	Cabin time	Cabin time	Cabin time	
8:00–9:00pm	Capture the Flag	Theme Activity	Mock Rock	Closing Campfire	
9:00–9:30pm	Snack	Snack	Snack	Snack	
9:30–10:30pm	Shower time	Shower time	Shower time	Shower time	
10:30–11:00	Flashlight time	Flashlight time	Flashlight time	Flashlight time	
11:00pm	Lights out	Lights out	Lights out	Lights out	



*Camp is filled with a wide range of activities, allowing campers the opportunity to enjoy their camp favorites as well as push themselves out of their comfort zone!
Please note daily schedules may change based on weather and themes for that week.

Packing List

Essential Items:

- Sleeping Bag & Pillow
- Towel & Washcloth (2 Sets)
- Soap and Shampoo
- Toothbrush and Toothpaste
- Comb/Brush
- Deodorant
- Pajamas
- Underwear
- Socks
- Pants/Shorts
- Shirts
- White Shirt for tie-dye
- Sweatshirt
- Hooded Rain gear
- Closed-toed shoes
- Swimsuit and Beach towel
- Sunscreen
- Bug spray
- Water Bottle
- Backpack
- Any Medication (In its original bottle)

Optional items

- Warm Jacket
- Flashlight
- Books
- Sunglasses
- Money for Camp Store
- Camera (Disposable preferred)
- Bracelet making string

What NOT to bring:

- All Weapons, including Pocket knives
- Cellphone and other electronic devices
- Gum, Candy, or Snacks
- Valuable items

*Prohibited items will be held in the office until check out.

Please write your child's name on ALL their belongings!

Howell Nature Center is not responsible for any lost, stolen, or damaged items.

Dress Code

The Camp Wonder dress code mirrors the policies of most schools. Closed-toed shoes are required for the day. Sandals, flip flops, and crocs are not recommended for any activity, except for swim time.



Excursions

Dear Families,

Thank you for registering your child for a Camp Wonder Excursion. We can't wait to meet your camper this summer! The information should help prepare you and your child for their excursion camp experience. If you have any questions or concerns, please reach out!

Contact Info

If you have questions prior to camp, please contact us at 517-376-9345 or summercamps@howellnaturecenter.org. In case of an **emergency** during camp, you may reach one of our camp leaders at 517-375-9713. If there is an emergency while on the Excursion, you will receive a call from our Excursions Director.

Forms

Every camper will need the following 3 forms completed (or updated) before the Excursion:

- Health Form
- Agreement to Participate Form (Waiver)
- Camper Code of Conduct Form

These Forms are built into the registration

Camper PIN

- At check-in, you will receive a unique PIN for your camper (siblings will not share a code).
- This private code must be given/shown to the check-out staff to pick up your camper.
- **PLEASE ONLY SHARE THIS CODE WITH ADULTS** that you trust picking up your child. You may text them the code number or send them a picture.



Check-In & Check Out

Check-In

Sunday 9:00 am - 10:00 am

- Check-in will take place in the Courtyard, next to Welcome Center (see site map).
- You will receive your Camper's PIN
- **All medications need to be given to the Excursions Director during check-in.**
 - They will hold onto them throughout the duration of the trip.
 - The medication needs to be in its original packaging.

Check Out

Friday 3:00 pm - 4:00 pm

- Check out will take place in the Courtyard, next to Welcome Center (see site-map)
- Give your Camper's PIN to staff
- Pick-up any leftover medications from the Excursions Director.

Additional Information

- You may send money with your camper for snacks/drinks on the road and souvenirs at any of the stops.
- Campers will be given the freedom to spend their money as they wish on appropriate items.
- If you are registered for the South Manitou Island trip, please note that HNC will provide the following backpacking gear:
 - Backpack, sleeping pad, sleeping bag, and cookware.
 - However, you are more than welcome to use your own gear instead.



Packing List

Essential Items:

- Sleeping Bag & Pillow
 - Rolled together separately from the duffle bag
- Towel & Washcloths
- Soap & Shampoo
 - Travel sizes work well
- Toothbrush and Toothpaste
- Comb/Brush
- Deodorant
- Pajamas
- Underwear
- Socks
- Pants/Shorts
- Shirts
- Sweatshirt/light Jacket
- Warm Jacket
- Footwear (Closed-toed)
- Hooded Rain Gear
- Swimsuit & Beach Towel
- Sunscreen & Bug spray
- Water Bottle
- Backpack
- Any Medication (In its original package)

What NOT to bring

- All Weapons, including pocket knives
- Cell phones and other electronic devices
- Valuable items

Prohibited items will be held in the office until Check out

Dress Code

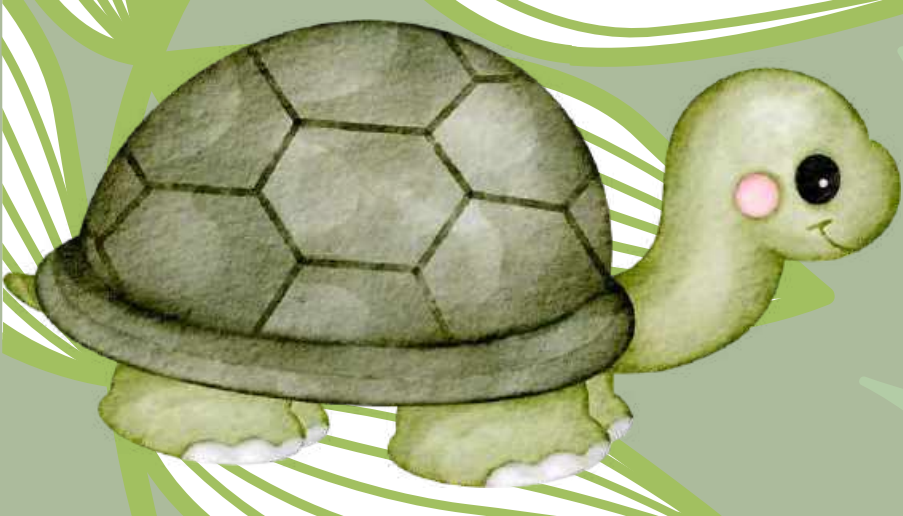
The Camp Wonder dress code mirrors the policies of most schools. Closed-toed shoes are **required** for the session. Sandals, flip flops, and crocs are not recommended for any activity, except for swim time.

Optional Items:

- Flashlight
- Camera (Disposable preferred)
- Book
- Sunglasses
- Spending money

Please write your camper's name on ALL belongings

Howell Nature Center is not responsible for any lost, stolen, or damaged items.



CITS

Dear Families,

Thank you for registering your child for our new 13-day CIT program. We can't wait to meet your CIT this summer! The information should help prepare you and your child for their camp experience as a CIT. If you have any questions or concerns, please reach out!

Additional information:

- You may send money with your camper for snacks/drinks on the road and souvenirs at any of the stops.
- CITS will be given the freedom to spend their money as they wish on appropriate items.
- They will be staying over the weekend and will have an opportunity to have their clothes washed.
 - If a certain washing soap is preferred, please send it with them.

Forms

Every camper needs to have the following 3 forms completed (or updated) prior to arrival:

- Health Form
- Agreement to Participate Form (Waiver)
- Camper Code of Conduct Form

*Note: These forms are built right in to the online registration.

Contact Info

If you have questions prior to camp, please contact us at 517-376-9345 or summercamps@howellnaturecenter.org.

In case of an **emergency** during camp, you may reach one of our camp leaders at 517-375-9713. If there is an emergency while on the CIT trip offsite, you will receive a call from our Excursions Director.



Check-in & Check out

Check-in:

Sunday 3:00 pm - 4:30 pm

- Check-in will take place at Grindley Lodge (see site map).
- Check-in will take place on a rolling basis. Please arrive during your time slot which will be determined by the first letter of your last name.
 - Last names beginning with A-L: Arrive between 3:00 pm – 3:45 pm
 - Last names beginning with M-Z: Arrive between 3:45 pm – 4:30 pm
- When you arrive, please pull into the parking lot, exit your vehicle, grab any mail, camp store money, or medications, and head to the check-in table. (You can leave your luggage in your vehicle.)
- At the tables, we will share your cabin and travel group assignments and verify Friday pick-up information as well as collect any medications, mail, or camp store money.

Check out:

Friday 2:00 pm - 3:00 pm

- Check-out will take place at Grindley Lodge (see site map).
- All families should arrive at 2:00 pm on Friday for our closing celebration!
- When you arrive, please park and head into Grindley Lodge. The slideshow will begin promptly at 2:15 pm.
- After the slideshow, campers will be grouped according to their cabin assignments.
- Families will be instructed to head back outside to the checkout table and give their PIN code to the Camp Director, then pick up any medications or leftover store money.
- Families will then show the “check out slip” to their camper counselor to pick up their child.
- Afterwards, all families are invited to share in an ice cream party before heading out!

Camper PIN

- At check-in, you will receive a unique **PIN** for each camper.
- This private code **must** be given at check out to pick up your camper.
- **PLEASE ONLY SHARE THIS CODE WITH ADULTS** that you trust picking up your camper you may text them the code or send them a picture.



Packing List

Essential Items:

- Sleeping Bag & Pillow
 - Rolled together separately from the duffle bag
- Towel & Washcloths
- Soap & Shampoo
 - Travel sizes work well
- Toothbrush and Toothpaste
- Comb/Brush
- Deodorant
- Pajamas
- Underwear
- Socks
- Pants/Shorts
- Shirts
- Sweatshirt/light Jacket
- Warm Jacket
- Footwear (Closed-toed)
- Hooded Rain Gear
- Swimsuit & Beach Towel
- Sunscreen & Bug spray
- Water Bottle
- Backpack
- Any Medication (In its original package)

What NOT to bring

- All Weapons, including pocket knives
- Cell phones and other electronic devices
- Valuable items

Prohibited items will be held in the office until Check out

Dress Code

The Camp Wonder dress code mirrors the policies of most schools. Closed-toed shoes are **required** for the session. Sandals, flip flops, and crocs are not recommended for any activity, except for swim time.

Optional Items:

- Flashlight
- Camera (Disposable preferred)
- Book
- Sunglasses
- Spending money

Please write your camper's name on ALL belongings

Howell Nature Center is not responsible for any lost, stolen, or damaged items.



Camper Policies

Medications

- Medication must be turned in at check-in to the Health Officer. CITS are not permitted to carry their own medications.
- All prescription medication must be in its original prescription bottle with the child's name on the label, and by state law, dispensed according to the directions on the label.
- If the doctor has changed the dosage or directions for administration, submit a signed letter from your physician with the new directions. This letter must include child's full name, dosage amount and delivery time(s).

Store Money

Optional: You may send spending money with your camper. It will be collected at check-in and stored until their cabin visits the camp store. Any unspent money will be returned at check-out or can be donated to our camp fund.

Average prices:

- Sweatshirts: \$40
- T-shirts: \$16
- Stuffed Animals: \$12-\$22
- Stickers and Keychains: \$3-\$8
- Rocks: \$1-\$15
- HNC packs and Bottles: \$7-\$20
- Nature toys and guides: \$10-\$20
- Trinkets: \$3-\$10

Camper mail

Optional: Campers love mail! You may mail your camper letters, or drop them off at check-in with the designated day of the week you'd like them delivered. If mailing, please send it early in the week to ensure it arrives on time.

Mailing Address:

Howell Nature Center Camp Wonder
Attn: [Camper Name] [Age Group]
1005 Triangle Lake Road
Howell, MI 48843

- CITS may bring cell phones to use only on the weekend. Please do not try to call your CIT. In case of an emergency, use the contact number listed on page 16.
- Weapons (including pocket knives) are also prohibited.
- CIT phones will be collected before the camping trip and they will get them back for the weekend. They will not have their cellphones during the second week while they are with other children.